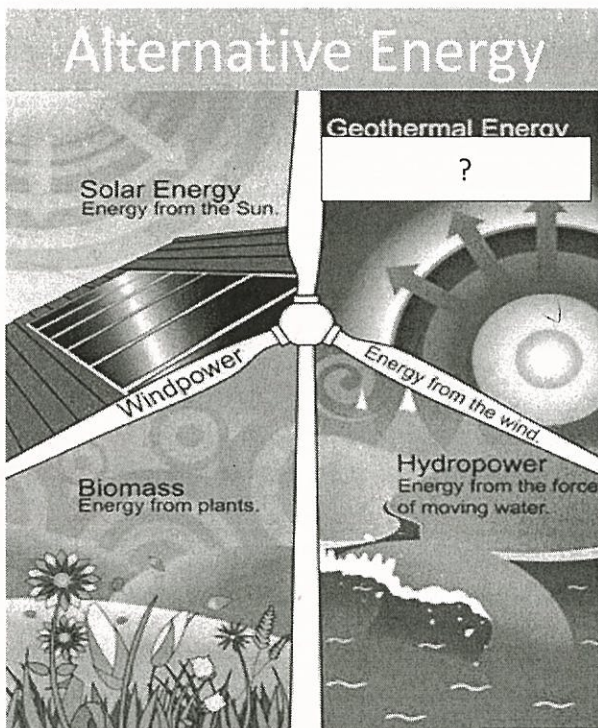


Name _____

Date _____

1. Wind energy is mainly used to generate electricity. All of the following are advantages of using wind energy to generate electricity EXCEPT (5.1.B) *NOT an advantage*
- A. Wind is free and can be captured efficiently. *✓ Pro*
 - B. Using wind to generate electricity helps reserve our fossil fuels. *✓ Pro*
 - C. Using wind energy cuts down on air pollution. *✓ Pro*
 - D. Building wind turbines causes animals to relocate. *con*

2. Alternative energy is being used across the world to conserve the Earth's fossil fuels. The diagram below shows the different forms of alternative energy.

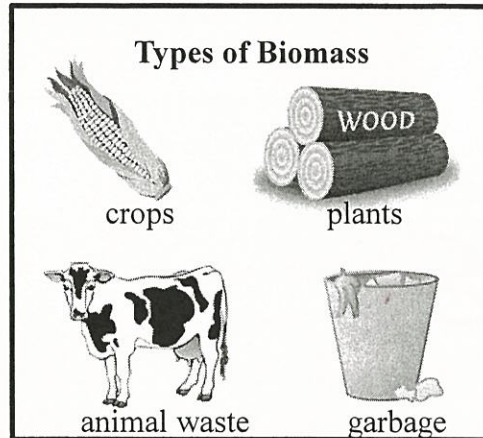


Which answer choice would best fit in the blank to describe geothermal energy?

Earth's Heat

- F. Energy from animals *Biofuels?*
- G. Energy from the heat of the Earth. *Geo thermal*
- H. Energy from ocean waves. *CON*
- J. Energy from fossils. *Fossil Fuels*

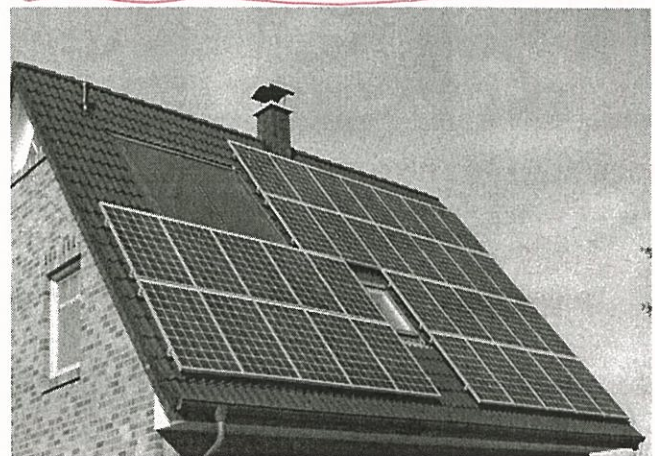
3. Biomass is a renewable resource that comes from the different materials below.



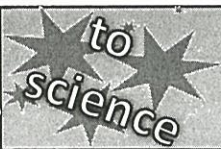
Which alternative energy resource is made from biomass? *living*

- A. wind energy
- B. geothermal energy *earth's heat*
- C. biofuels
- D. hydroelectric power *water*

4. On one island almost no fossil fuels are burned. People use wind, solar, and biofuel resources to meet their energy needs. Which form of energy is being used for the house pictured below?



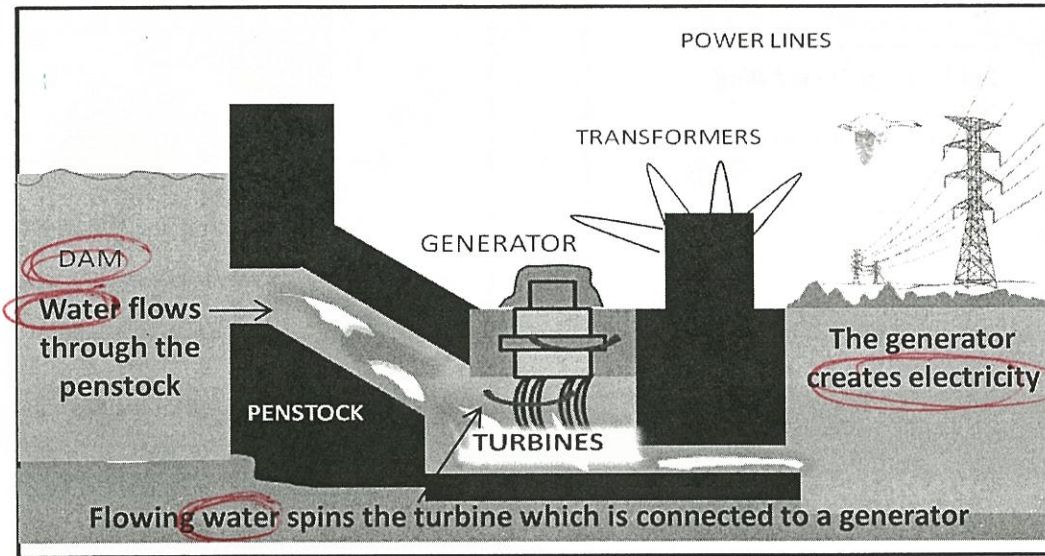
- F. solar *SUN*
- H. fossil fuels *CON*
- G. wind *NO turbine*
- J. hydropower *water*



Name _____

Date _____

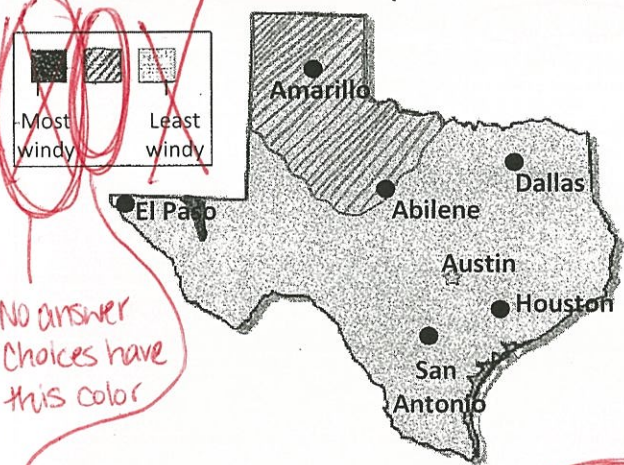
5. The diagram below shows how one power plant produces electricity. (5.2.D)



The power plant most likely produces electricity by producing--

- A. geothermal energy *Earth's heat*
- B. biofuels *living matter*
- C. hydroelectric energy *water*
- D. wind energy

6. The state of Texas produces far more wind energy than any other state. The map below shows the amount of wind in different parts of Texas. (5.2.D)



No answer choices have this color

If wind farms are built in windy locations, which two cities most likely use the most wind energy as an alternative resource?

- F. Amarillo and Abilene
- G. Houston and Dallas
- H. El Paso and Houston
- H. Dallas and Austin

7. In order to decrease pollution and protect our environment, many people are producing energy from alternative sources. Which of these is an example of producing energy from an alternative source? (5.1.B)

- A. Using fuel made from oil in vehicles. *Fossil Fuels*
- B. Cutting down trees to build a mall. *clearing land*
- C. Building a dam to produce electricity. *hydro power*
- D. Using soil that retains the most water. *Not energy source*

8. One disadvantage of geothermal energy is that it is not available in most areas and can be very costly. Why is geothermal energy only available in some areas?

- F. Many areas do not allow it. *can't forbid it*
- G. All areas of the Earth do not have hot, melted rock close to the Earth's surface.
- H. All areas of the Earth do not have running water. *hydro*
- J. The sun does not shine as brightly on all areas of the Earth's surface. *is solar*