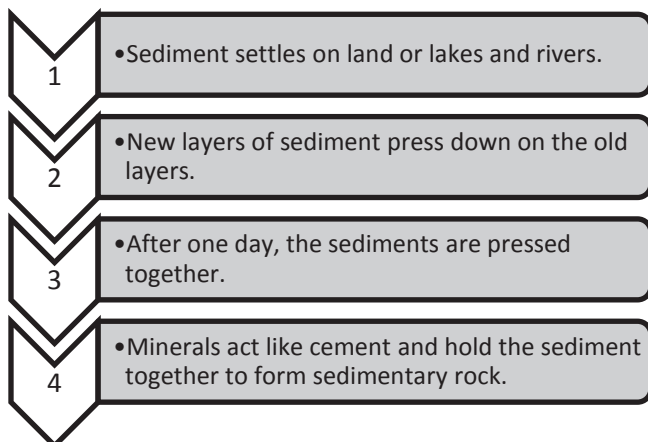


Name \_\_\_\_\_

Date \_\_\_\_\_

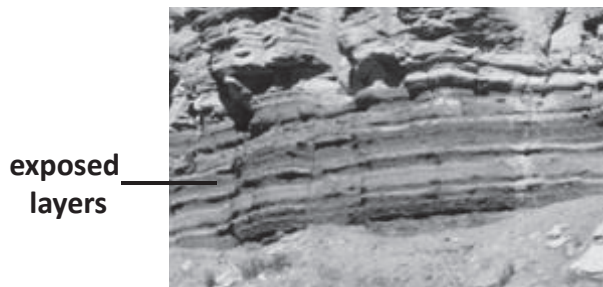
1. The flow chart below shows the process that led to the formation of sedimentary rock.



Which number in the flow chart is **NOT** correct in describing the formation of sedimentary rock?

- A. Number 1
- B. Number 2
- C. Number 3
- D. Number 4

2. Over many years, layers of sedimentary rock can be exposed. The picture below shows the exposed layers of sediment that have formed into sedimentary rock. (5.2.D)



Which answer choice best explains how sedimentary rock becomes exposed over the years?

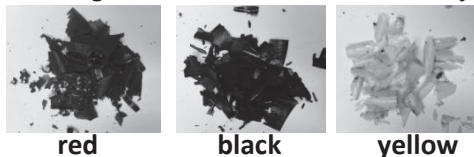
- F. from weathering and erosion
- G. from a hurricane
- H. from a tsunami
- J. none of the above

3. All of the following are related to the formation of fossil fuels **EXCEPT**?

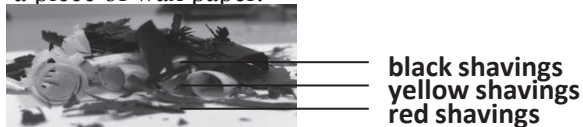
- A. decomposition of plants and animals
- B. heat and pressure
- C. sedimentary rock
- D. melting and freezing

4. A group of students design an experiment to model the formation of sedimentary rock. The steps are shown below. (5.3.C)

1. Use a pencil sharpener to make crayon shavings of three different colored crayons.



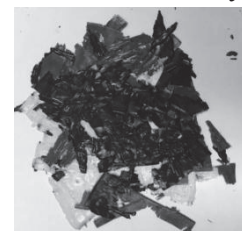
2. Layer each color of crayon shavings on top of a piece of wax paper.



3. Place another piece of wax paper on top of the layered shavings and press down firmly with your hand.



4. After a few minutes remove the top layer of wax paper to see the model of sedimentary rock.



Which part of the experiment represents sediment?

- F. wax paper
- G. crayon shavings
- H. pressing down with the hand
- J. pencil sharpener

Name \_\_\_\_\_

Date \_\_\_\_\_

5. The advertisement below refers to prehistoric animals, power plants, and energy. What can be inferred from this advertisement? (5.3.B)

The advertisement features a circular graphic on the left containing the text "prehistoric animals & power plants". To the right of this graphic is an illustration of a mammoth. Below the mammoth is a photograph of a power plant with several smokestacks emitting white smoke. A large black arrow points from the mammoth down to the power plant. At the bottom of the advertisement, the text "ENERGY FROM THE PAST!" is written in bold, capital letters.

- A. Prehistoric animals are being found in power plants.
- B. Prehistoric animals have nothing to do with power plants.
- C. Energy that was used millions of years ago is still used today in power plants.
- D. Power plants burn fossil fuels, which are from the remains of prehistoric animals, to create energy.

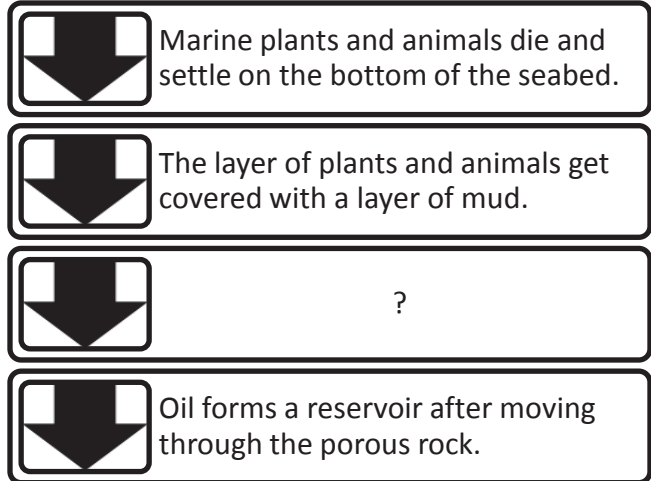
6. Sand dunes are formed from layers of sediment.



Which of the following best explains how this sand dune can become sedimentary rock over many years? (5.3.C)

- F. The heat from the sun melts the sand into a rock.
- G. Lower layers of sand are compacted by the weight of the upper layers.
- H. Wind erosion cements the sand together into a rock.
- J. Freezing ice compacts the layers of sand into a rock.

7. The flow chart below shows the process of oil formation.



Which answer choice best completes the flow chart?

- A. Over time, layer after layer of sediment creates pressure and compresses the dead organisms into oil.
  - B. The layer of marine plants and animals move to a new location.
  - C. Dead plants are buried under dirt.
  - D. Water covers the layer of mud and produces oil.
8. All of the following are examples of fossil fuel conservation **EXCEPT**-- (5.1.B)
- F. Walk or ride a bike instead of driving a car
  - G. Buying a hybrid or electric car
  - H. Burning coal to produce heat
  - J. Using solar panels to create electricity
9. Which example is like the process that leads to the formation of sedimentary rock?
- A. Blowing through a straw to move sand
  - B. Putting three layers of clay on top of each other and pressing down on them with a force
  - C. Crumbling a cookie
  - D. Shaking a jar filled with rocks