

Name _____

Date _____

1. The chart below shows what is necessary for the formation of a sand dune. (5.2.D)

1. A large amount of loose sand with little vegetation
2. ?
3. An obstacle that causes the sand to settle

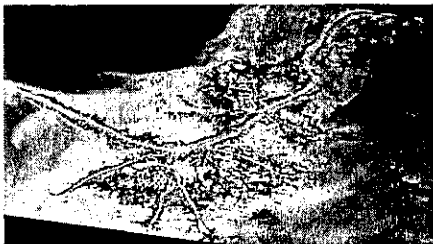
Which answer choice would best fit in the missing blank?

- A. A large amount of rainfall
- B. Wind or a breeze to move the grains of sand
- C. A hot sunny day
- D. Freezing and thawing of ice

2. Which of the following is an example of a process that shapes the Earth's surface?

- F. Wind
- G. Water
- H. Ice
- J. All of the above

3. The photograph below shows the Mississippi River entering the Gulf of Mexico. As it enters the Gulf of Mexico it creates a landform called a delta.



How does a river form a delta?

- A. A glacier erodes large amounts of rock.
- B. Strong winds create sediment at the mouth of the river.
- C. As the river loses energy it deposits sediment from eroding land.
- D. Strong waves pushed sediment towards the river.

4. Students are exploring sand dunes and how they form. They fill a paint tray with sand and blow through a straw to move the grains of sand. The students demonstrate safe practices during the experiment most likely by— (5.4.B)

- F. wearing a fire proof vest.
- G. wearing protective gloves.
- H. wearing safety goggles.
- J. using a fire extinguisher.

5. The rock pictured below has cracked and broken apart. Which process most likely caused this rock to crack and break apart?



- A. deposition of sediments
- B. wind erosion
- C. freezing and thawing rain water
- D. erosion from waves

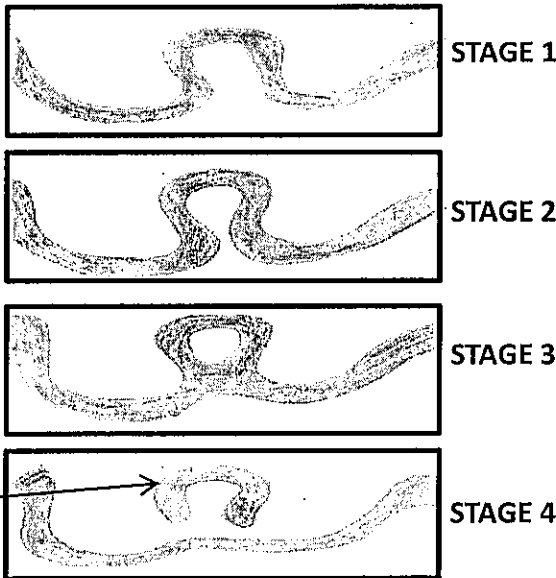
6. A valley is a low area of land between hills or mountains. How are valleys formed?

- F. water or glacier erosion
- G. wind erosion
- H. layers of sand and mud are deposited
- J. hurricanes destruct the land

Name _____

Date _____

7. The diagram below shows a flowing river that has changed over many years and has formed an oxbow lake. Oxbow lakes form when a curve in the river grows so big that the two sides join together. Once the two sides join, the flow of water slows down and sediment begins to build up and cuts off the river.



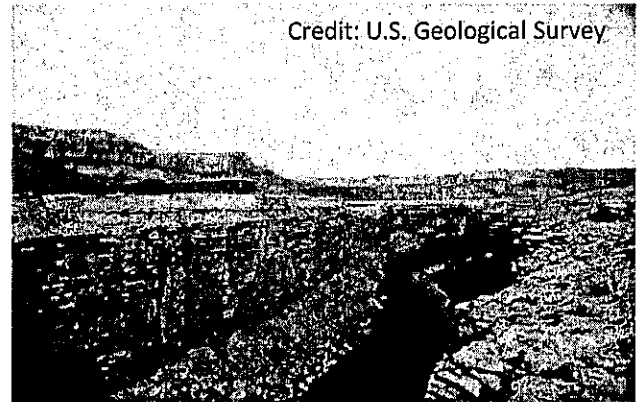
The sediment building up and cutting off the river is an example of--

- A. erosion
- B. weathering
- C. deposition
- D. lava flow

8. All of the following are examples of slow changes to the Earth's surface from wind, water, or ice EXCEPT—

- F. A valley is created by a moving glacier.
- G. A canyon is created by a moving river.
- H. A cave forms from limestone.
- J. A hurricane floods the land.

9. The photograph below shows a part of the Grand Canyon located in Arizona. Over time the Grand Canyon continues to get wider and deeper.(5.2.D)

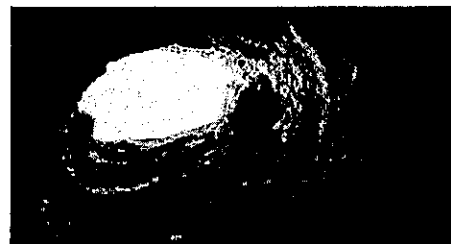


Credit: U.S. Geological Survey

Which process most likely continues to make the Grand Canyon wider and deeper?

- A. The flowing river erodes away rock and soil.
- B. A glacier scrapes away the sides of the rock.
- C. Large waves crash into the sides of the rock and erodes them away.
- D. Sediment is being deposited by the river.

10. Sea caves are created near coastal cliffs and are found all over the world. They are typically formed out of sandstone or limestone.



Which natural force is responsible for the formation of a sea cave?

- F. Glaciers erode the rock away at the shoreline.
- G. Pounding waves erode the rock away at the shoreline.
- H. Volcanic eruptions erode the rock away at the shoreline.
- J. Strong winds during a hurricane erode the rock away at the shoreline.