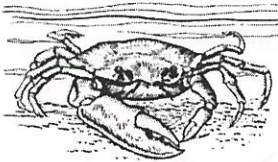


Organisms and Environments- 5.9A(R), 5.9B(R), 5.9C(S), 5.9D(S) Name \_\_\_\_\_

1. The box below shows facts about a fiddler crab.

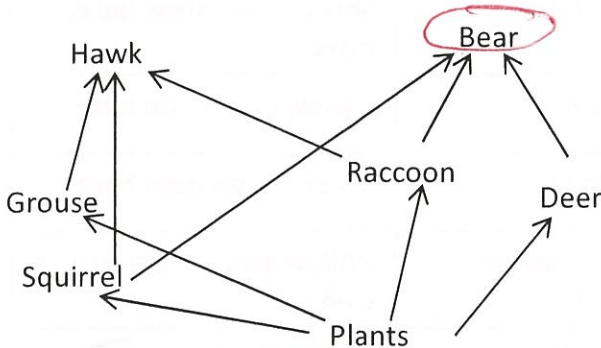


- |   |                          |
|---|--------------------------|
| 1. Moves sideways rather than forward or backward | <i>Behavior</i>          |
| 2. Digs burrows to hide                           | <i>changes (Soil) NL</i> |
| 3. Shed their shells as they grow                 | <i>structure</i>         |
| 4. Eats algae                                     | <i>living</i>            |

Of the four facts listed, which one is an example of the fiddler crab changing its environment to meet its needs?

- (A) Number 1                      (B) Number 2  
(C) Number 3                      (D) Number 4

2. The diagram below shows a food web.



What is the role of the bear in this food web?

- (F) producer *plants*                      (G) consumer *eats*  
(H) prey *get eaten*                      (J) decomposer *eats dead organisms*

3. What role does the sun play in a food chain?

- (A) The Sun provides energy for plants which pass down nutrients to consumers.  
(B) The Sun provides carbon dioxide for consumers in the food chain. *need oxygen*  
(C) The Sun is not needed in a food chain. *?*  
(D) The Sun provides oxygen for the food chain. *plants*

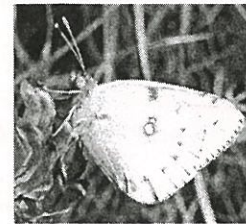
4. The picture below shows a hydroelectric dam which was built for energy conservation. However, building a dam of this size can have a negative impact on an ecosystem.



What effect does building this dam most likely have on an ecosystem?

- (F) Local animals and habitats are destroyed due to flooding of large land areas.  
(G) The weather conditions will change.  
(H) ~~More~~ *less* greenhouse gases will be produced.  
(J) The climate will change.

5. This butterfly sips nectar from a flower. As it feeds, the butterfly carries nectar from flower to flower.



How does this action most benefit plants?

- (A) by releasing more oxygen in the air *leaves*  
(B) by pollinating flowers ✓  
(C) by giving the plant nutrients *Roots*  
(D) by helping the plant grow stronger *roots*

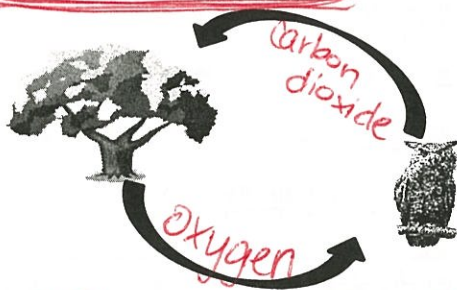
Organisms and Environments- 5.9A(R), 5.9B(R), 5.9C(S), 5.9D(S) Name \_\_\_\_\_

Don't do

6. A mature coral reef takes hundreds of years to form. When people build on land near the shore, it can affect nearby reefs. Which of the following is a positive effect of people building on land near the shore?

- (F) Fertilizer being used on lawns runs off the land and into rivers. *harmful*
- (G) Mud from construction sites washes into the ocean.
- (H) New homes and businesses bring in tourists to the area.
- (J) Sewage flows into the ocean from homes.

7. The diagram below show the carbon dioxide-oxygen cycle. Which statement best explains the carbon dioxide-oxygen cycle?

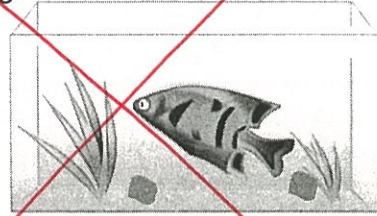


- (A) The plant produces and releases carbon dioxide; the owl takes in carbon-dioxide and releases oxygen.
- (B) The plant produces and releases oxygen; the owl takes in oxygen and releases carbon-dioxide.
- (C) Both the plant and the owl release oxygen and take in carbon-dioxide.
- (D) Both the plant and the owl release carbon-dioxide and take in oxygen.

8. If all plants were removed from the environment, what effect would it have on animals?

- (F) Animals would produce more carbon dioxide.
- (G) Animals would produce more oxygen. *Plants*
- (H) Animals would not survive without oxygen from the plants.
- (J) Animals would not be effected.

9. Organisms must interact with living and non-living elements in order to survive. Below is an example of living and non-living things interacting.



Don't do

What type of model does the aquarium represent?

- (A) terrarium
- (B) marsh
- (C) ecosystem
- (D) flowing river

10. The forest is a home to many organisms. The table below shows several different forest organisms and what they consume.

Organism	Foods Eaten
Red Fox	Shrew, snowshoe hare, insects
Lynx	Shrew, snowshoe hare
Hawk	Shrew, snowshoe hare
Snowshoe hare	Willow tree, white spruce tree

Which of the following forest food chains is in the correct order?

- (F) *Producer* willow tree → *Herbivore* snowshoe hare → *Carnivore* hawk
- (G) willow tree → white spruce tree → hawk
- (H) ~~Lynx~~ → shrew → snowshoe hare
- (J) ~~red fox~~ → insects → willow tree

*Producers don't get energy from other producers*  
*Consumers* NOT Producers