

Earth and Space- 5.7A(R), 5.7B(R), 5.7C(R), 5.8C(R), 4.8C(S), 3.7B(S), 3.8D(S)

Name

(DUE) FR 4-21-19

1. During a low tide, John and his friends built a sand castle on the beach. Several hours later a high tide came in and began washing the sand castle away.



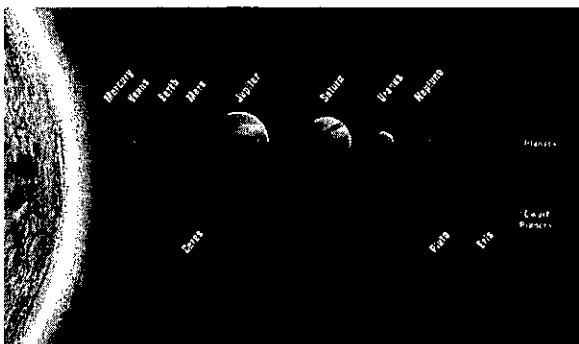
What is the cause of high and low tides?

- (A) Earth's rotation *Day/Night*
- (B) The pull of gravity from the Sun and Moon *All causes tides*
- (C) An underwater earthquake *Tsunami*
- (D) Strong winds blowing across the water *Waves*

2. All of the following can cause a rapid change to the Earth's surface except

- (F) tsunami *Rapid*
- (G) landslide *Rapid*
- (H) volcano *Rapid*
- (J) flowing river *slow (erosion)*

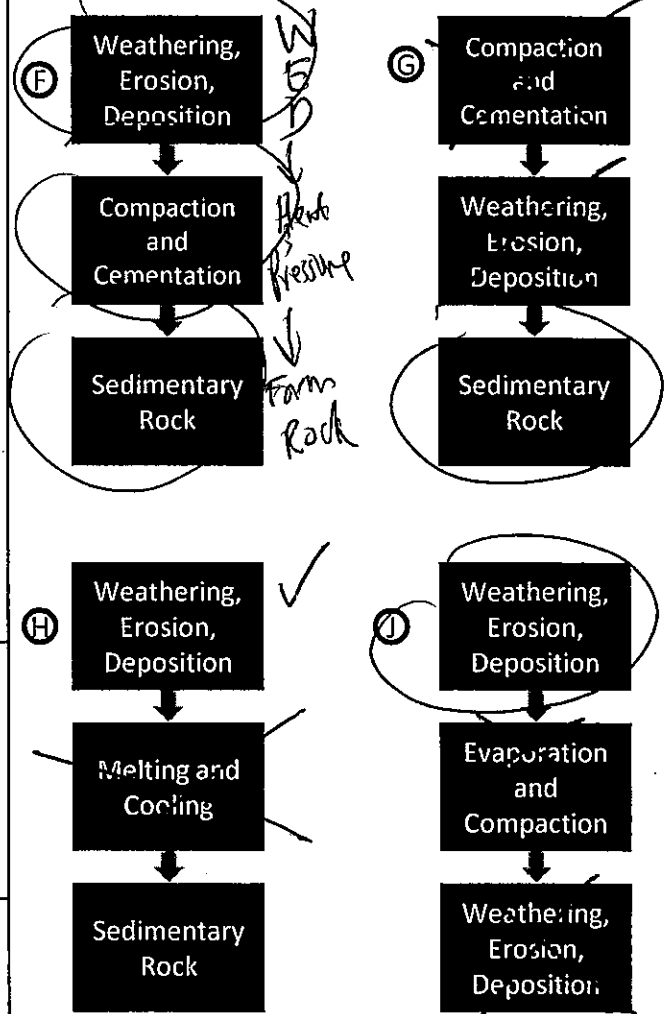
3. Pictured below are the planets and the sun.



Which statement best explains the relationship between the planets and the Sun?

- (A) The Sun revolves around the planets. *Sun doesn't move*
- (B) The Sun rotates around the planets. *See star*
- (C) The planets rotate around the Sun. *orbit*
- (D) The planets revolve around the Sun. *True*

4. Which diagram best explains the formation of sedimentary rocks?



5. The breaking down of rocks, soil, and minerals is called

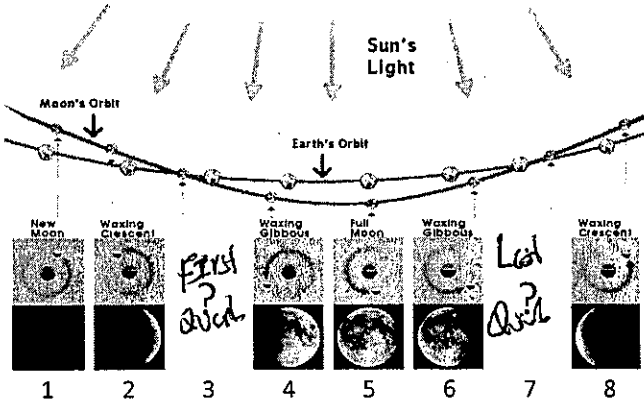
- (A) erosion *movement of sediment*
- (B) sediment *Small pieces of rock*
- (C) weathering *Breaking Down*
- (D) deposition *Drop in new place*

6. Biofuels are designed to replace gasoline in order to reduce pollution. Biofuels come from

- (F) plants that have just been harvested *Biofuel*
- (G) fossils *Fossil fuels*
- (H) heat from beneath the Earth's surface *Geothermal*
- (J) moving water *Hydropower*

Earth and Space- 5.7A(R), 5.7B(R)5.7C(R), 5.8C(R), 4.8C(S), 3.7B(S), 3.8D(S) Name _____

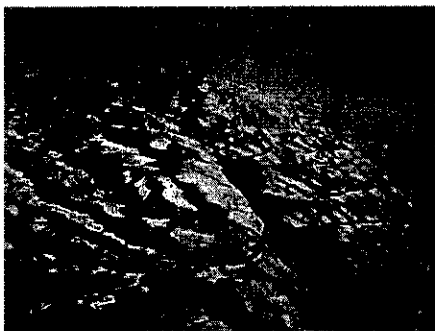
7. The diagram below shows how the Moon appears to change its shape over time.



Which phase of the moon best fits in blank 3?

- (A) First Quarter
- (B) Last Quarter
- (C) Full Moon
- (D) New Moon

8. According to the picture below, which natural occurrence most likely caused this rapid change in the Earth's surface? *Quake*

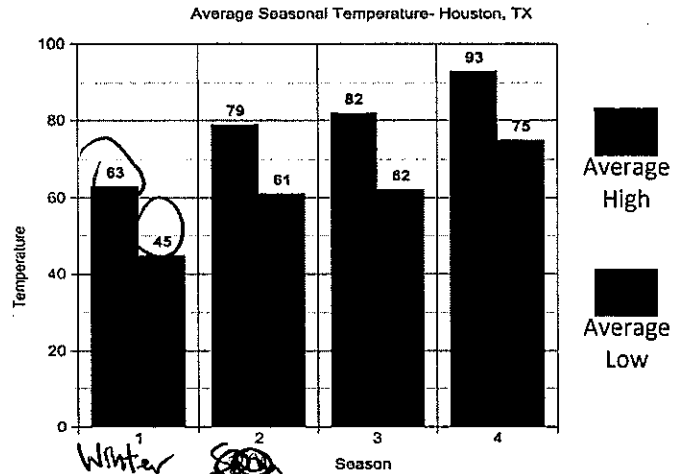


- (E) Tornado *Destroys houses*
- (G) Earthquake *Crack*
- (H) Landslide *At bottom of hill*
- (J) Volcano *Eruption*

9. Which answer choice is NOT an example of how landforms can change as a result of water? *True*

- (A) Water freezes in the cracks of a mountain. *True*
- (B) A flowing river erodes sediment. *True*
- (C) A sand dune forms from a flowing river. *False - Wind picks up sand*
- (D) Waves crash against a cliff. *False*

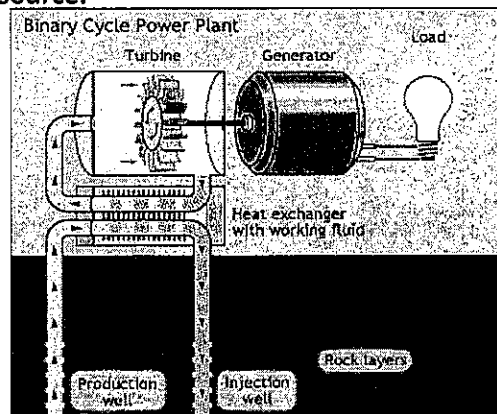
10. The graph below shows the average seasonal temperature for Houston, TX.



Based on the information in the graph, which number would most likely represent the average high and low temperature for the Winter season? *Winter will have coldest temp*

- (F) Season 2
- (G) Season 3
- (H) Season 1
- (J) Season 4

11. The diagram below shows how a power plant produces electricity using an alternative energy source.



DOE's Office of Energy Efficiency and Renewable Energy

What is this power plant most likely using to produce electricity?

- (A) Biofuels *Plants*
- (B) Solar energy *Solar*
- (C) Wind energy *Wind*
- (D) Geothermal energy *Under Earth surface*