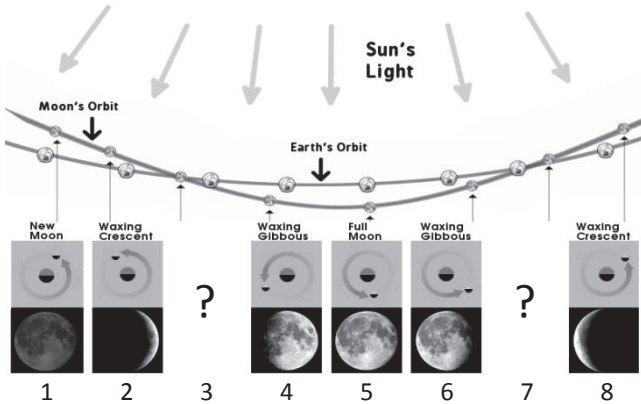


Earth and Space- 5.7A(R), 5.7B(R)5.7C(R), 5.8C(R), 4.8C(S), 3.7B(S), 3.8D(S) Name _____

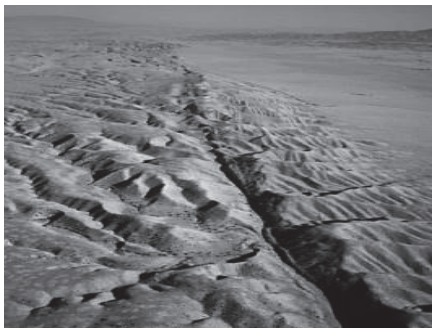
7. The diagram below shows how the Moon appears to change its shape over time.



Which phase of the moon best fits in blank 3?

- (A)
- (B)
- (C)
- (D)

8. According to the picture below, which natural occurrence most likely caused this rapid change in the Earth's surface?

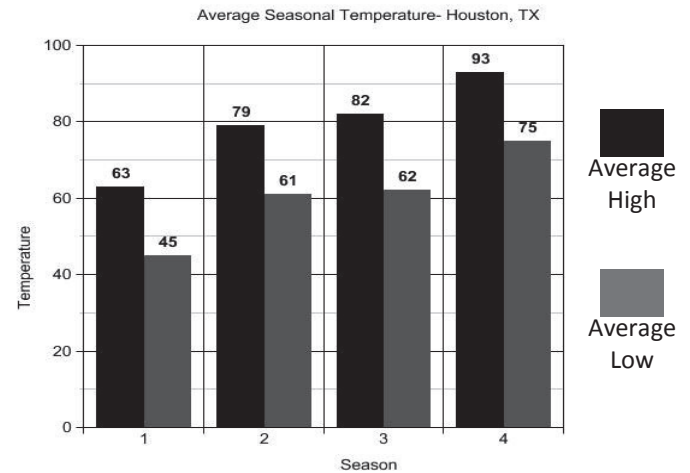


- (F) Tornado
- (G) Earthquake
- (H) Landslide
- (J) Volcano

9. Which answer choice is NOT an example of how landforms can change as a result of water?

- (A) Water freezes in the cracks of a mountain.
- (B) A flowing river erodes sediment.
- (C) A sand dune forms from a flowing river.
- (D) Waves crash against a cliff.

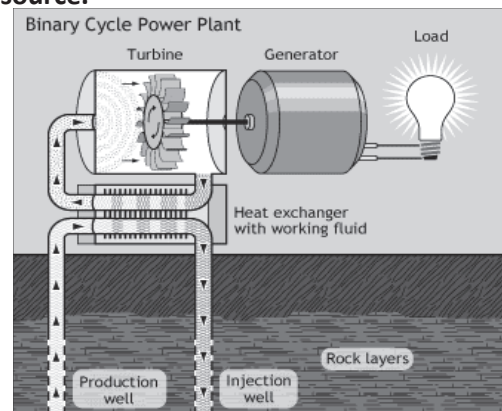
10. The graph below shows the average seasonal temperature for Houston, TX.



Based on the information in the graph, which number would most likely represent the average high and low temperature for the Winter season?

- (F) Season 2
- (G) Season 3
- (H) Season 1
- (J) Season 4

11. The diagram below shows how a power plant produces electricity using an alternative energy source.



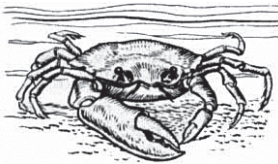
DOE's Office of Energy Efficiency and Renewable Energy

What is this power plant most likely using to produce electricity?

- (A) Biofuels
- (B) Solar energy
- (C) Wind energy
- (D) Geothermal energy

Organisms and Environments- 5.9A(R), 5.9B(R), 5.9C(S), 5.9D(S) Name _____

1. The box below shows facts about a fiddler crab.

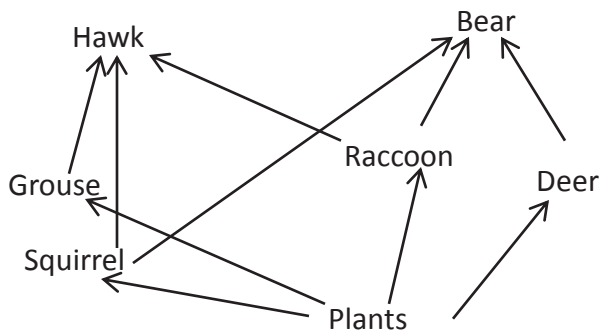


- | |
|---|
| 1. Moves sideways rather than forward or backward |
| 2. Digs burrows to hide |
| 3. Shed their shells as they grow |
| 4. Eats algae |

Of the four facts listed, which one is an example of the fiddler crab changing its environment to meet its needs?

- (A) Number 1 (B) Number 2
 (C) Number 3 (D) Number 4

2. The diagram below shows a food web.



What is the role of the bear in this food web?

- (F) producer (G) consumer
 (H) prey (J) decomposer

3. What role does the sun play in a food chain?

- (A) The Sun provides energy for plants which pass down nutrients to consumers.
 (B) The Sun provides carbon dioxide for consumers in the food chain.
 (C) The Sun is not needed in a food chain.
 (D) The Sun provides oxygen for the food chain.

4. The picture below shows a hydroelectric dam which was built for energy conservation. However, building a dam of this size can have a negative impact on an ecosystem.



What effect does building this dam most likely have on an ecosystem?

- (F) Local animals and habitats are destroyed due to flooding of large land areas.
 (G) The weather conditions will change.
 (H) More greenhouse gases will be produced.
 (J) The climate will change.

5. This butterfly sips nectar from a flower. As it feeds, the butterfly carries nectar from flower to flower.



How does this action most benefit plants?

- (A) by releasing more oxygen in the air
 (B) by pollinating flowers
 (C) by giving the plant nutrients
 (D) by helping the plant grow stronger roots